

# THE WOODRUFF LIBRARY

## Whats happening in February 2026

270 East Hayne St.  
Woodruff, SC 29388  
(864) 476-8770

Mon-Tues:  
10am-8pm

Wed-Fri:  
10am-6pm

Sat:  
10am-4pm

Sun:  
Closed

### STORYTIME

Preschool Storytime  
Wed • 11am



kanopy



LIBBY



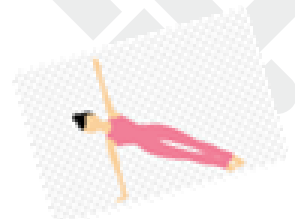
SPARTANBURG COUNTY  
PUBLIC LIBRARIES  
[www.spartanburglibraries.org](http://www.spartanburglibraries.org)



Adults:  
BINGO!  
Every Tuesday  
at 1pm



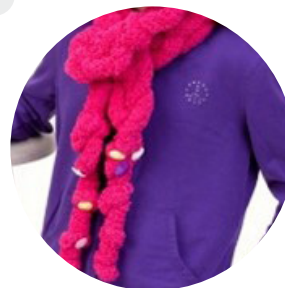
Adults:  
Journaling Roundtable  
Every 1st Monday  
at 4:30pm



Adults:  
Pilates  
Every Wednesday  
at 4pm



6-12:  
Valentine String Art  
February 3  
at 4pm



Homeschool:  
Make a Cozy Scarf  
February 9  
at 2pm



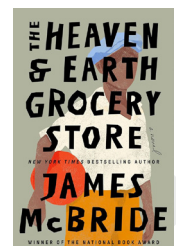
Teens DIY  
Paper Flower Bouquets  
February 5  
at 4pm

### Librarian's Note:

The Book Discussion Selection (on display during month of February) is *The Heaven and Earth Grocery Store* by James McBride.

The Book for the Book Discussion on February 4 is *Klara and the Sun* by Kazuo Ishiguro.

Movie Review Crew - February 11 - *Brief Encounter* (1945) & *The Lunchbox* (2013)



# February 2026

## Events at Woodruff Library

### Adults

Monday, 2/2  
4:30pm  
Journaling Club

Tuesdays in February  
1pm  
Adult Bingo Bash

Wednesday, 2/4  
1pm  
Woodruff Readers Book  
Discussion

Wednesday, 2/11  
2pm  
Movie Review Crew

Wednesdays, 2/4, 2/18, & 2/25  
4pm  
Pilates  
\$2, ages 12 & up

### Teens

Thursday, 2/5  
4pm  
Teen DIY: Paper Flower  
Bouquets

Thursday, 2/19  
4pm  
Teen Escape Room: The  
Werewolf Experiment

Thursday, 2/26  
4pm  
Teen Tech Petting Zoo

### Kids

Tuesday, 2/3  
4pm  
Mini Makers: Valentine's String  
art

Monday, 2/9  
2pm  
Homeschool: Make a Cozy  
Scarf

Monday, 2/23  
4pm  
Family LEGOs and More

### VITA

2/7, 2/12, 2/13, 2/20, & 2/21  
11am  
Volunteer Income Tax  
Preparation

## Woodruff Maker Lab

Woodruff's newest edition to its Maker Lab is the Epson Archival Scanner – capable of scanning professional large-format scans (12.2" x 17.2"), restore faded color, clarity and detail to old photos, scan multiple images at one time and save files to zip/flash drive.



Other available offerings and features of Woodruff Maker Lab include: basic sewing instruction, embroidery machine, Cricut, lamination equipment, Epson archival scanner, photos from your cellphone, buttons, stickers, and heat press items. Come utilize the equipment. It's here! Give us a call at 864-476-8770 for more information.